

# LIBERTY HALL VENUE INFORMATION

Updated: 11/19/2018

## GENERAL

**Address:** 644 Massachusetts St.  
**City:** Lawrence  
**State:** KS  
**Zip:** 66044  
**Time Zone:** Central  
**Latitude:** 38° 58' 17.2668"  
**Longitude:** -95° 14' 8.862"

**Capacity:** 1050 GA, 703 Seated (397 Balcony Cap)  
**Ages:** All Ages (Can be 18+ or 21+)  
**Website:** www.libertyhall.net  
**Building Phone:** 785.749.1972  
**Building Fax:** 785.749.2661  
**Production Phone:** N/A  
**Production Fax:** N/A

## STAFF

**Events Manager:** Dean Edington, 785.749.1972, libertyhallevnts@gmail.com  
**Technical Director:** Dean Edington, 785.749.1972, libertyhallevnts@gmail.com  
**Production Manager:** Contact promoter/talent buyer for their Production Manager contact

**ADVANCE CALLS MON - FRI FROM 10AM - 5PM ONLY PLEASE**

## TICKETING

**Agency:** Ticketmaster  
**Contact:** Dean Edington, 785.749.1972, libertyhallevnts@gmail.com  
**Ticket Type:** Computer generated  
**Seating:** Seated Balcony, Standing or Seated Floor (General Admission or Reserved Seating depending on configuration)  
**Doors Open:** One hour prior to show  
**Guest Lists:** Turn in to Production Manager at least 30 minutes prior to doors, house passes available if needed.

## STAGING

**Stage Type:** Fixed Wood  
**Sound Wings:** N/A  
**Proscenium:** 34' 10"w x 20'h  
**Mix Location:** FOH: Center, MON: SL  
**Barricade:** 8x 4' sections of steel blow-through (32 feet)  
**Staging Notes:** Sub boxes sit on stage far left and right corners  
**Piano:** Mason & Hamlin Model BB 7' grand (DOS tuning at renter's expense)

**Stage Size:** 55'w x 35' 9"d x 3'h  
**Wing Size:** N/A  
**Stage Clearance:** 42' to grid steel  
**FOH Distance to DS Edge:** 35'  
**Bicycle Rack:** 6x 8' sticks (usually for FOH if GA)  
**Risers:** 1 - 8'x8'x1' Wood, Carpeted, Non-Rolling  
(2x 4'x8' sections)

## POWER / RIGGING

**Stage Power:** 1x 200amp 3 phase, 1x 200amp Single phase Delta  
**Stage Power:** 12x 20amp (NEMA 5-15 Standard) | 2x 30amp (NEMA L14-30), 1x 50amp (NEMA 6-50)  
**Shore Power:** 2x 50amp (NEMA 14-50) Must be in spaces closest to venue on 7th St. (can unplug self after hours if needed)  
**Electrician:** Contact Production Manager to schedule an Electrician if a tie-in is required

**Rigging Style:** Roof Steel and Grid Steel - limited weight  
**Wt. Per Point:** See attached rigging plot  
**Wt. Per Beam:** See attached rigging plot  
**Beam to Beam:** See attached rigging plot  
**Rigging Notes:** NO POINTS IN THE HOUSE BEYOND PROCENIUM - CANNONT FLY TOURING STACKS

**Location:** Stage Left Wall  
**Stage to High Steel:** 49'  
**Stage to Low Steel:** 42'  
**Floor to Low Steel:** N/A  
**Floor to High Steel:** N/A

## SOUND & LIGHTS

**FOH Mains:** Flown Nexo Line Array; 4x Geo S1210 and 1x Geo S1230 per array, 2x PS15 center fills, 2x Alpha S2 2x18 subs/side  
Dolby Lake LM44 processing, Midas DL32 32x16 Stage Box, 40x8 analog split snake

**FOH Board:** Midas M32 & Yamaha M7CL  
**Contact:** contact Events Manager for DOS sound contact

**Lighting:** 14 Par 64 DS, 16 PAR 64 MS, 16 PAR 64 US on bars, 8 lekos in house (box boom positions) 1 34' iron backdrop pipe on winch

**Light Board:** NSI MC 7532 controller  
**Contact:** contact Events Manager for DOS Lighting contact

**MON Board:** Behringer X32 by Midas  
**MON Rig:** 12x JBL SRX815 Wedges/Front Fills  
3x JBL SRX818LF Drum/Sidefill Subs  
2x JBL SRX835 3-Way Sidefill Tops

**Fog/Haze:** Water base OK with advance notice  
**Spotlights:** NO spotlights in house, must rent

## PARKING / LOAD IN

**Bus Parking:** Preferred parking is in one of the 4 - 4x parallel parking spaces on 7th St between Mass St and New Hampshire St.

**Truck Parking:** Preferred parking is in one of the 4 - 4x parallel parking spaces on 7th St between Mass St and New Hampshire St.

**Permit :** Can bag meters of the 4x parallel spaces adjacent to the building on 7th St ONLY.

**Parking Notes:** **Put trailer in spot closest to alley so people don't park behind it.** Metered parking MON - SAT, 6AM to 6PM  
See attached map for best parking locations.

**Load In Area:** Via alley between Massachusetts & New Hampshire  
**# of Trucks:** Can get up to 2 at a time with 1st pulling in past door, put out dock extension then back in 2nd truck to dock

**Load In Notes:** Can either back up truck to dock extension or push through alley.

**Forklift:** None  
**Distance to Stage:** Double doors off dock direct to stage

### DRESSING ROOMS / CATERING

**# of Rooms:** 3 rooms and one large hall  
**Internet:** Wireless: LibertyHall-Guest, Password: 785popcorn  
Hard line in basement main hall for tour wifi/router in "speakeasy" area  
**# of Offices:** 3 rooms and one large hall  
**Internet:** Same  
**Room Sizes:** 3 rooms and one large hall  
**Bathrooms:** 2  
**Showers:** 1  
**Laundry:** No laundry facilities. No same day dry cleaner. Local Fluff & Fold only before Noon.  
Various clothing racks, iron, ironing board & steamer in-house  
**Catering:** Buyouts / Menu Order (Per Advance)  
**Contact:** Production Manager / Runner

**Location:** Basement, down stairs from USL  
**Phone:** N/A  
**Location:** Basement, down stairs from USL  
**Phone:** N/A  
**Furniture:** Fully furnished  
**Location:** Near the front of house end of basement  
**Location:** Near the front of house end of basement  
**Kitchen Available:** No catering facilities or kitchen available

### MERCHANDISE / CONCESSIONS

**Merch Rate:** 80/20  
**Locations:** House Right along S wall, grids/tables avail. Do not block exit.  
**Contact:** Production Manager  
**Notes:** No duct tape on the racks please and absolutely NO tape on walls.  
Please do not hand out free stickers during the show, only on the out. Folding tables and grids available.  
**Alcohol:** Yes, full bar  
**Notes:** No open containers outside the building. Bar will pour bottles and/or cans on artist's ADVANCE request.

**Who Sells:** Artist Sells  
**Tax:** 9.050%  
Artist Retains Tax  
**Concessions Sold:** Water, Soda, Popcorn, Candy, Chips

### STAFFING / PERMITS / POLICIES

**Security:** House staffs all front of house / door security. Promoter/Production Manager staffs all backstage security.  
**Contact:** Events Manager

**Photo Policy:** Per Advance\*. House policy is No Audio Recording, No Video Recording, No Professional Cameras w/out a pass.  
*\*please advance Photo/Video/Audio policies if you want something other than the house policy to be posted*

**Runner:** Contact Production Manager for DOS runner contact info.

**Limo / Taxi:** GTI, Inc., 301 Maple St., Lawrence, KS 66044, 785.842.8294, www.gtilawrence.com

**Pyro Permit:** NO Pyro Allowed

**Glitter/Confetti:** NOT allowed. \$1,500 cleanup charge if glitter or confetti are used against regulations.

**Fire Marshall:** N/A

**Stagehands:** Non-Union Local Crew

**Fog/Haze:** Water base OK with advance notice

**Contact:** Production Manager

	<u>In</u>	<u>Show</u>	<u>Out</u>
<b>Steward:</b>	N/A	N/A	N/A
<b>Up Rigger:</b>	2 Hr Max	Flat	2 Hr Max
<b>Down Rigger:</b>	2 Hr Max	Flat	2 Hr Max
<b>Hands:</b>	4 Hr Min.	Per Hour	4 Hr Min.
<b>Loaders:</b>	Hands	Hands	Hands
<b>Spot Op:</b>	N/A	Per Hour	N/A
<b>Electrician:</b>	Flat rate	Flat rate	Flat rate
<b>Runner:</b>	Flat + gas	Flat + gas	Flat + gas

**Notes:**  
Hands must be fed lunch as part of catering budget for all load ins earlier than 1:00pm. "All Day" hands must be fed dinner as part of catering budget.

### MISCELLANEOUS NOTES

Venue is **NO SMOKING** in all areas including stage, dressing rooms, production areas, etc.

Basement dressing room/production office areas are only accessible from a staircase down from USL. There are doors that exit to the video store and to 7th street that MUST remain locked at all times.

#### **ABSOLUTELY NO DEAD CASE STORAGE OR PRODUCTION AREAS IN SR/SL EXIT TUNNEL HALLWAYS**

These areas are to be clear at all times per local fire egress ordinances. Fire Marshall will immediately shut down any event where this area is impassable by fire code standards.

# LIBERTY HALL

## SOUND & LIGHTING SPECIFICATIONS

Updated: 11/19/2018

### CONSOLES

- FOH** Midas M32, Yamaha M7CL
- MON** Behringer X32 by Midas
- AUX** Allen & Heath MixWizard 16 Mk2 (WZ16:2 DX) 16 ch analog board

### MAINS

- 8 Nexo Geo S1210 Line Array Boxes (4/side)
- 2 Nexo Geo S1230 Line Array Boxes (1/side)
- 4 Nexo Alpha S2 Subs (2 2x18"/side)
- 2 Nexo PS15-R2 (Balcony Center Fills)
- 1 Dolby Lake LM44 Digital Processor
- 2 Nexo NX242 Digital TDController
- 4 Yamaha T5n Power Amplifiers (Geos/Alphas)
- 1 Yamaha P7000S Dual-Channel Power Amplifier (PS15s)
- 1 dbx 1231 Dual Channel 31-Band Graphic Equalizer
- 1 APB-DynaSonics MixSwitch
- 1 Furman PL-Plus Series II Power Conditioner

### MONITORS/SIDEFILLS

- 12 JBL SRX815 Wedges/Front Fills
- 3 JBL SRX818LF Drum Sub/Sidefill Sub
- 2 JBL SRX835 3-Way Sidefill Tops
- 1 dbx 231 Dual Channel 31-band Graphic Equalizer

### SNAKES/CABLING

- 1 Midas DL32 Digital Stage Box
- 1 100' GLS Audio Over Ethernet Digital Snake Cable  
(*Ethercon Compatible, RJ45/CAT6 Build, AES50-Compliant*)
- 1 [FOH Snake] Pro Co Snakeworks 40x8 split snake
- 1 50' Whirlwind Medusa 16x4 channel Snake
- 1 50' Whirlwind Mini 12 channel Low Profile Drop Snake
- 1 Pro Co StageMaster SMA 20 channel Drop Snake
- 1000 Feet of XLR cable in 100', 50', 25', 12', 3' lengths

### MICROPHONES

- 6 Shure SM58 vocal mic
- 6 Shure SM57 instrument mic
- 1 Audix OM-5 vocal mic
- 1 Sennheiser e835 vocal mic
- 2 Røde M5 condenser mics (matched pair)
- 1 Shure BETA 52A kick drum mic
- 2 Shure PG81 overhead/instrument mics
- 3 Shure PG56 snare/tom mics
- 1 Shure PG52 kick drum mic
- 1 Shure PGX2 wireless handheld mic
- 1 Shure BG 3.1 wireless handheld mic
- 1 Shure PG185 wireless lavalier mic
- 4 Shure Centroverse CVO hanging condenser mics

### DIRECT BOXES

- 4 Whirlwind IMP 2 passive DI Boxes
- 2 Rapco/Horizon DB-1 passive DI Boxes
- 1 Behringer Ultra-DI DI100 phantom/battery powered active DI box

### LIGHTING - CONTROL

- 1 NSI MC 7532 Controller (Stage Lights)
- 1 NSI MC 7016 Controller (House Lights)  
3-Pin Microplex Control

### LIGHTING - DIMMING

- 4 NSI DDS 9800 Dimmer Packs (Stage)
- 2 NSI NRD 8000 Dimmer Packs (Stage)
- 2 NSI NRD 8000 Dimmer Packs (House)  
3-Pin Microplex Control

### LIGHTING - HL BOX BOOM

- 4 ETC Source Four 750 Lekos
- 1 Conventional PAR 64

### LIGHTING - HR BOX BOOM

- 4 ETC Source Four 750 Lekos
- 1 L&E 750 Leko
- 1 Conventional PAR 64

### LIGHTING - STAGE ELECTRICS

- 14 Conventional PAR 64 on DS Electric
- 16 Conventional PAR 64 on MS Electric
- 16 Conventional PAR 64 on US Electric

### PROJECTION

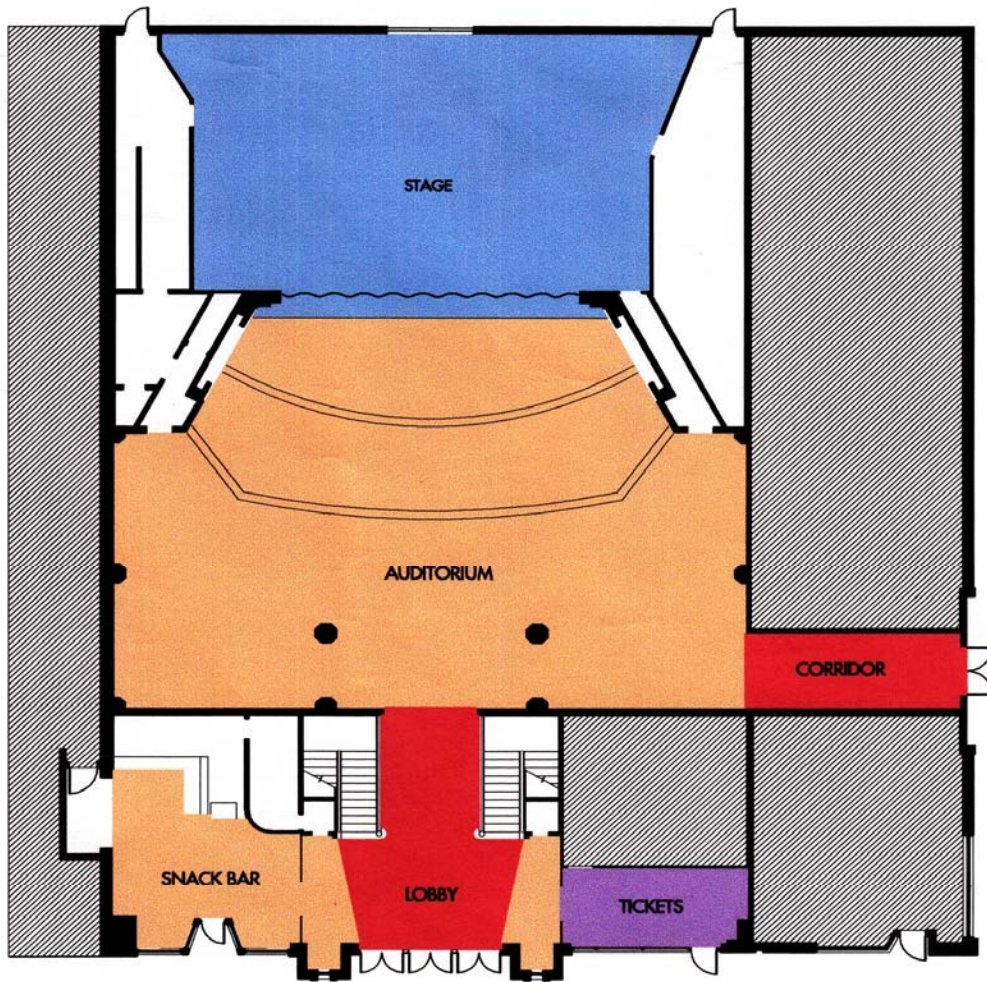
- 1 Christie Solaria One+  
2k Digital Cinema Projector  
(FOR CINEMA USE ONLY)
- 1 32' w x 14' h movie screen  
(Flat & Scope masking, on motor winch)  
(Blocks entire proscenium opening)
- 1 Optoma EP761 DLP 1024XGA Projector
- 2 9' w x 7' h Fixed-hang screens  
(Hung in HL & HR alcoves near stage)

### STANDS

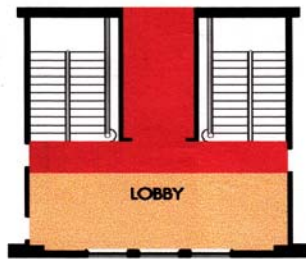
- 12 Tripod base boom stands
- 9 Heavy base straight stands
- 8 Short boom stands (varying bases)
- 3 Shure A50D drum mounts
- 4 Table top mic stands (varying bases)
- 1 Atlas Sound SB36W Studio Boom  
Stand (with casters)

### MISCELLANEOUS

- 1 34' iron pipe backdrop bar
- 5 Clear Com headsets & base station
- 4 Pipe & Drape Uprights (adj. 8' - 14' H)
- 4 Pipe & Drape Crossbars (adj. 6' - 10' W)
- 4 Pipe & Drape Bases
- 12 Pipe & Drape Basic Black Panels



1 FIRST FLOOR PLAN



2 SECOND FLOOR LOBBY

